



**INSPIRED  
WASHROOMS**

## **Inspired Washrooms**

Beautiful commercial washrooms supplied  
and installed across the UK

[inspiredwashrooms.co.uk](http://inspiredwashrooms.co.uk)

[sales@inspiredwashrooms.co.uk](mailto:sales@inspiredwashrooms.co.uk)

0115 811 4242

## Our Core Beliefs

At Inspried Washrooms we have three core beliefs and these beliefs dictate everything we do.



### Unrivalled Quality

We only work with the best suppliers and we have the best tradesmen



### 5 Star Customer Service

You'll have a dedicated Project Manager and fitting team, all of whom will go above and beyond for you



### Value For Money

We don't want to be the cheapest, instead we see this as you achieving the project you hoped for whilst receiving the service you dreamed of within your budget.

We may be a modern company, but we have very traditional values. By that we mean offering good old fashioned customer service and so you will receive the level of personal care and commitment you thought had simply gone out of fashion.

We believe you should treat people, the way 'you' want to be treated so 'you' will always receive the advice and guidance that suits 'your' needs, not ours.



## About us

We offer an extensive range of washroom refurbishment services for education, leisure, sport centres, holiday parks, office, commercial and healthcare premises.

With over 15 years experience, we've developed a keen understanding of how to plan and provide superb washrooms. We're comprised of a project management team and we allocate dedicated fitting teams who we've worked with for a long time, meaning we can rely on them for a consistent quality of work across projects.

We are washroom, toilet and changing room specialists - not a jack of all trades and so we have the specialist knowledge to give you the **WOW** factor your project deserves.

## A Turn-key Service

You'll benefit from a full turn-key solution, where you can leave us to work and relax in the knowledge that your project will be delivered on-time, on-budget and most importantly, to an excellent standard. We take the stress out of a washroom refurbishment project.

We are here to help - from a simple refresh, to a full scale refurbishment, we have the in house trades to exceed your expectations.



## Kaleidoscope Cubicles

### A colourful design with durability & functionality

A colourful and robust design produced for children of all ages. Designed specifically for wet and dry areas or areas of high humidity and fluctuating temperatures.

Features:

1. Solid Grade Laminate
2. Heavy-duty Fittings (SAA)
3. Made-To-Measure
4. Wet & Dry Applications
5. Anti-Bacteria & Anti-Microbial

## Cubicles & Washroom

### Premier One

#### Our Most Popular Product

Designed specifically to be produced using compact laminate and bolt through fixing systems, robust constructions and quality at a competitive price. Hardwearing and water resistant materials, making it a versatile washroom range.

An excellent toilet, changing room and shower cubicle system.

Features:

1. Solid Grade Laminate
2. Heavy-duty Fittings (SAA)
3. Made-To-Measure
4. Wet & Dry Applications
5. Anti-Bacteria & Anti-Microbial



B070 FA  
Blanc Megève

O111 FA  
Orgeat

## Cubicle Colours

G029 FA  
Gris Tourterelle

G075 FA  
Gris Cendré

G059 FA  
Gris Orage

B015 FA  
Blanc Menuires

Z022 FA  
Zeste Coco

G003 FA  
Gris Perle

C011 FA  
Caviar

N005 FA  
Noir

C017 FA  
Coquille d'Œuf

B116 FA  
Beige Nature

P001 FA  
Pierre de Lune

R036 FA  
Rouge Cerise

R057 FA  
Rouge  
Amarante

V109 FA  
Vert Bali

C049 FA  
Cactus

G031 FA  
Genêt

C062 FA  
Capucine

R059 FA  
Rose Indien

V110 FA  
Vert Impérial

P092 FA  
Pomme Verte

Z016 FA  
Zeste de Citron

V014 FA  
Vinye

C189 FA  
Cyclamen

B001 FA  
Bleu Flash

B048 FA  
Bleu Oslo

C018 FA  
Chardon

Z038 FA  
Zeste Indigo

B086 FA  
Bleu Caraïbes

B119 FA  
Bleu Turquoise

N028 FA  
Nova Mousse

M047 FA  
Mousse

B194 FA  
Bleu Buée

N023 FA - Surf  
Nova Saphir

C149 FA  
Chêne  
Colorado

N056 FA  
Noisetier  
Naturel

C102 FA  
Chêne Clair  
Horizontal

C180 FA  
Chêne Alba

E104 FA  
Érable Féroé  
Horizontal

N115 FA  
Noyer Havana  
Horizontal

N026 FA  
Noyer Ombré

C101 FA  
Chêne Brun  
Horizontal

B100 FA  
Banian Blanchi

C183 FA  
Chêne  
d'Argent

B101 FA  
Banian Noirci

T105 FA  
Teck Carbone

M124 FA  
Marbre Taisa

T108 FA  
Travertin  
Naturel

M134 FA  
Marbre Siroco

M001 FA - Surf  
Maryland Clair

M003 FA - Surf  
Maryland  
Foncé



## Wall Panelling Systems

**An easy way to make a washroom design stand out**

We offer a wide range of unique colours when it comes to wall panelling and the right colour combination with your other washroom elements can create a space that stands out.

As well as looking great, wall panelling protects high traffic areas, meaning your washroom stays as good as new for a long time.

Wall panelling is a great alternative to tiles as you don't have grout lines and can be installed over almost any surface.

## Wall Panelling Colours

Satin White	Vivid Purple	Vivid Pink	Vivid Red	Vivid Orange
Vivid Olive	Vivid Green	Vivid Blue	Vivid Black	Vivid Steel
Vivid Lime	Vivid White	Vivid Aqua	Vivid Yellow	Vivid Royal Blue
Pastel Sandbank	Pastel Oyster	Pastel Cream	Pastel Grey	Pastel Blue
Pastel Cesco	Pastel Seafoam	Pastel Fawn	Pastel Linen	Pastel Malva
Pastel Verona	Pastel Mint	Pastel Green	Pastel Cloud	

“

Very professional and reliable, from the design stage all the way through to completion. Would highly recommend and will also use on future projects.

Andy Mcmanus Site Manager at Hornsby House School



## Safety Flooring Options

Flooring plays a key role in a washroom refurbishment, especially in settings where the washroom will experience heavy footfall such as schools, leisure centres and hospitality settings.

It goes without saying that the flooring options should look great, but they also need to be resilient to the heavy traffic they will experience and provide a good level of slip resistance.

We offer a range of flooring options that tick all of those boxes and your project manager will be more than happy to advise you on the most suitable product for your washroom.

✓ Slip resistant

✓ Hard wearing

✓ Great looking



## Flooring Colours

6012 Dove Slate	6013 Urban Concrete	6011 Jurassic Stone	6014 Natural Slate	
5089 Dark Concrete	5091 Flagstone Grey	5092 Clay Stone	5087 Light Concrete	5082 Deep Fossil
5083 Pebble Grey	5081 Muted Stone	4042 Grey Flourite	4043 Agate Grey	4047 Galena
4044 Gypsum	4046 Copal	4049 Andesite	4051 Angelite	4054 Blue Quartz
4045 Jetstone	5084 Pearl River	5086 Valley Rock	3374 Oiled Oak	3372 Sun Bleached Oak
3357 Silver Oak	3375 Roasted Limed Ash	3376 Tropical Pine	3387 American Oak	3297 Warm Beach
3337 Rustic Oak	3107 Classic Oak	3347 European Oak	3373 Aged Oak	3371 Nero Oak

“

From my initial website inquiry to the work being completed all aspects were carried out in a professional and timely manner. Having our 2 washrooms and kitchen area refurbished. The job was finished a day earlier than agreed and I am very pleased with the end result.

Duncan Jones Director Fastlight Distributors.



## Compact Solid Grade Laminate

### Hard wearing and humidity resistant

The compact Solid Grade Laminate Reysipur® is a dense self-supporting decorative panel with a black core offering high surface resistance to scratches, abrasion & impact.

Its high resistance to humidity allows the creation of fittings for all washroom areas (*changing rooms, shower cubicles, toilets, locker rooms*) and for all applications (*cubicles, wall cladding, partitions, vanity units and lockers etc.*)

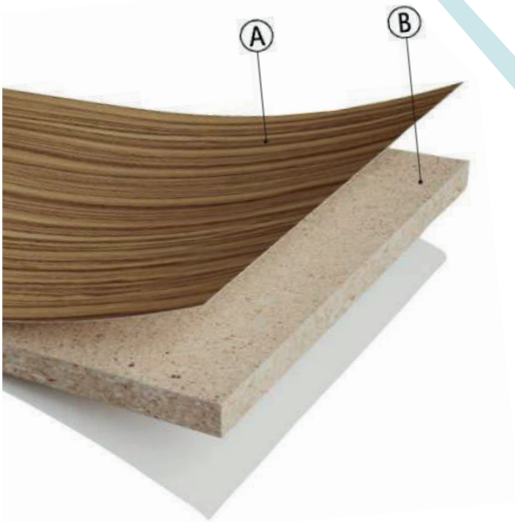
## Cubicle Materials

## Melamine Face Chipboard (MFC)

### Cost effective and long-lasting

Melamine Faced Board offers the most cost-effective solution for non-wet area applications. It is a self-supporting, moisture resistant board with a chipboard core with two decorative faces, which are impregnated with melamine resin.

For lower traffic environments, the Panoprey® offer is an efficient alternative that complements the range.



INSPIRED  
WASHROOMS



1

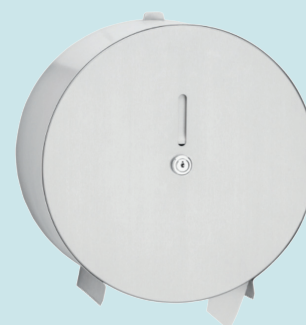


2



3

4



## Accessory Options

### 1. Franke Sissons Airblast (Hands Under) Hand Dryers

The Airblast hand dryer is a high powered, fast drying, innovative hand dryer. Drying time is approximately 10-12 seconds.

### 2. Franke Sissons DRYX500N (In Hand) Hand Dryer

High Speed "Hands-in" hand dryer for wall mounting, antibacterial ABS plastic, drying time 7-10 seconds.

### 3. Franke Sissons RODX616 Soap Dispenser

Foam soap dispenser for wall mounting, stainless steel, surface satin finished, cylinder lock with Franke standard key.

### 4. Franke Sissons CHRX669 Mini Jumbo Toilet Roll Holder

Jumbo roll holder for wall mounting, stainless steel, surface satin finished, cylinder lock with Franke standard key.



Dispensers



Roll Holders



Hand Dryers



INSPIRED  
WASHROOMS

## 3D Visual Renders



Clients show eagerness in having a glimpse at the design of their project even before the work starts.

In this case, 3D visualization provides an opportunity for customers to see the layout of the washrooms interior designs, lighting and texture even before completion of the development process. With quality and professional 3D visualization, the likelihood of failure decreases a lot! Our Experienced 3D visualizers can measure precisely every piece of your project and visualize how it will look, invest once and you don't need to spend extra money on improving or fixing the problems. You will save time and money.





## How to choose your colours

We offer a broad range of customisable elements to your washrooms. These are some of the key elements you can choose to have in a variety of textures and colours.

A. IPS Panel

C. Safety Floor

E. Vanity Frame

G. Pilaster

B. IPS Frame

D. Vanity Panels

F. Wall Panelling System

H. Door

## IPS

We offer IPS (Integrated Plumbing Systems) for sinks, toilets and urinals. These systems offer easy maintenance, simple cleaning and a premium style for great prices.

Manufactured to precise measurements to fit your commercial washroom, you'll love the way they blend in and add simple character to the space.

A pre-plumbed IPS unit is perfect for any project that might need concealed pipework and waste without having to make the mess of chasing out a wall ready for any pipes that need to go within them.

## Perfect for Schools, Hospitals, Shops & Offices

Easy maintenance and access to all of the pipework, an Integrated Plumbing System makes easy work of any tweaks and upgrades that you may want in the future. So, planning for longevity with IPS units can save you money in the long run.







INSPIRED  
WASHROOMS

## Hornsby House School

Hornsby House School was in real need of a professional team to come in and refurbish their washroom. After searching around they found us and we couldn't have been happier. We love taking something old and rundown and turning it into a modern, clean and inspiring space for everyone to use.

We delivered a durable solution that will last for a long time, without sacrificing on the look and feel of the washroom.

“Very professional and reliable, from the design stage all the way through to completion. Would highly recommend and will also use on future projects.”

Andy Mcmannus, Building Manager

### Project Type

Washroom Refurbishment

### Location

London



INSPIRED  
WASHROOMS



## Inspired Washrooms Case Studies

Look through our most recent washroom builds and installations to see our professional work.

[inspiredwashrooms.co.uk](https://inspiredwashrooms.co.uk)

[sales@inspiredwashrooms.co.uk](mailto:sales@inspiredwashrooms.co.uk)

0115 811 4242



INSPIRED  
WASHROOMS





## Fast Light LTD

Mr Jones wanted our expert team to go into their current washrooms / kitchenette area. For it to be revamped and refurbished into a space that they can be proud of. Due to the fact that we have brilliant working relationships with suppliers, we were able to install amazing commercial materials and features, all for an affordable price.

We delivered a washroom featuring Safety flooring, Compact grade cubicles, suspended ceiling, IPS units and much more.

“From my initial website inquiry to the work being completed all aspects were carried out in a professional and timely manor. The job was finished a day earlier than agreed and i am very pleased with the end result.”

Duncan Jones, Director at Fastlight Distributors

### Project Type

Washroom Refurbishment & Kitchen

### Location

Basingstoke



INSPIRED  
WASHROOMS



[www.inspiredwashrooms.co.uk](http://www.inspiredwashrooms.co.uk)

0115 811 4242

[sales@inspiredwashrooms.co.uk](mailto:sales@inspiredwashrooms.co.uk)





## Knowle Church Of England School

Having had a tired old washroom for a good few years, Mike Smart at Knowle Church of England School recognised this and found us online and contacted us right away. We know that he needed a specific range of expertise to make sure that everything would be done to the right standard and that our works would align with the strict regulations that a school has to follow.

After talking to Mike, listening to exactly what it is that they need and the style that they were after, we got to work on this prestigious school toilet refurbishment project.

“Inspired washrooms did a fantastic job on refurbishing a Y1 Toilet, look forward to using them again on more projects.”

Michael Smart, Knowle Church of England School

### Project Type

Washroom Refurbishment

### Location

Birmingham

INSPIRED  
WASHROOMS







## SCM Group UK Limited

Adam Chambers, Service Digital & Operations Manager at SCM Group UK, contacted us through our form on the website. In their initial email, Adam explained exactly what they'd like from us and wanted our team to quote for their commercial washroom refurbishment.

SCM wanted Safety flooring, Compact grade cubicles, suspended ceiling, IPS units and much more. We were also told that this commercial washroom should be designed and built in such a way as to promote longevity.

“From my initial website enquiry to completion of our groundfloor washrooms refurbishment Chris and his team have been professional throughout. The quality of the workmanship and materials is to a very high standard and nothing was too much trouble if we asked for small tweaks and changes.”

Adam Chambers, SCM Group UK Limited

### Project Type

Office Washroom Refurbishment

### Location

Nottingham



INSPIRED  
WASHROOMS



[www.inspiredwashrooms.co.uk](http://www.inspiredwashrooms.co.uk)

0115 811 4242

[sales@inspiredwashrooms.co.uk](mailto:sales@inspiredwashrooms.co.uk)



Beautiful commercial washrooms supplied  
and installed across the UK

[inspiredwashrooms.co.uk](https://inspiredwashrooms.co.uk)

[sales@inspiredwashrooms.co.uk](mailto:sales@inspiredwashrooms.co.uk)

0115 811 4242